

IH091

General Features

The model IH091 (“Indoor Station”) grinder pump station is a complete unit that includes: the grinder pump, check valve, HDPE (high density polyethylene) tank, controls, and alarm panel. The IH091 was designed specifically for new home construction.

- 91 gallons (344 liters) of capacity
- On-slab or in-slab installation
- Designed specifically for indoor installation in the mechanical room of the home

The IH091 uses E/One’s “hardwired,” or “wired,” pump model where a cable connects the motor controls to the level controls through watertight penetrations.

Operational Information

Motor

1 hp, 1,725 rpm, high torque, capacitor start, thermally protected, 120/240V, 60 Hz, 1 phase

Inlet Connections

4-inch PVC socket weld

Discharge Connections

Pump discharge terminates in 1.25-inch NPT female thread. Can easily be adapted to 1.25-inch PVC pipe or any other material required by local codes.

Discharge

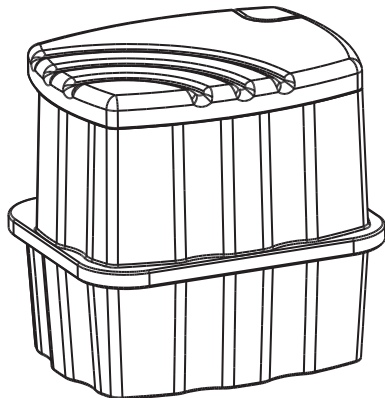
15 gpm at 0 psig (0.95 lps at 0 m)
11 gpm at 40 psig (0.69 lps at 28 m)
7.8 gpm at 80 psig (0.49 lps at 56 m)

Accessories

E/One requires that the Uni-Lateral, E/One’s own stainless steel check valve, be installed between the grinder pump station and the street main for added protection against backflow.

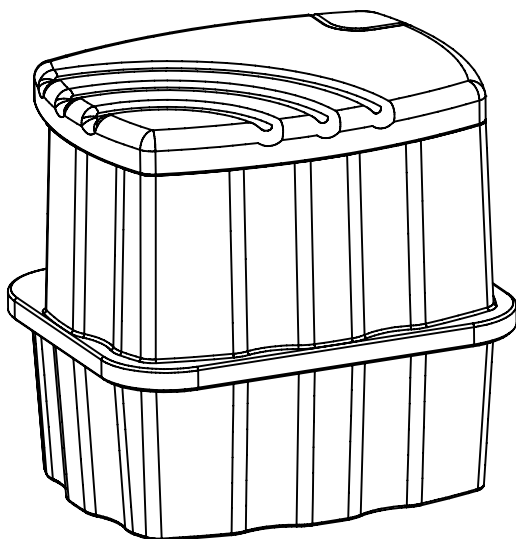
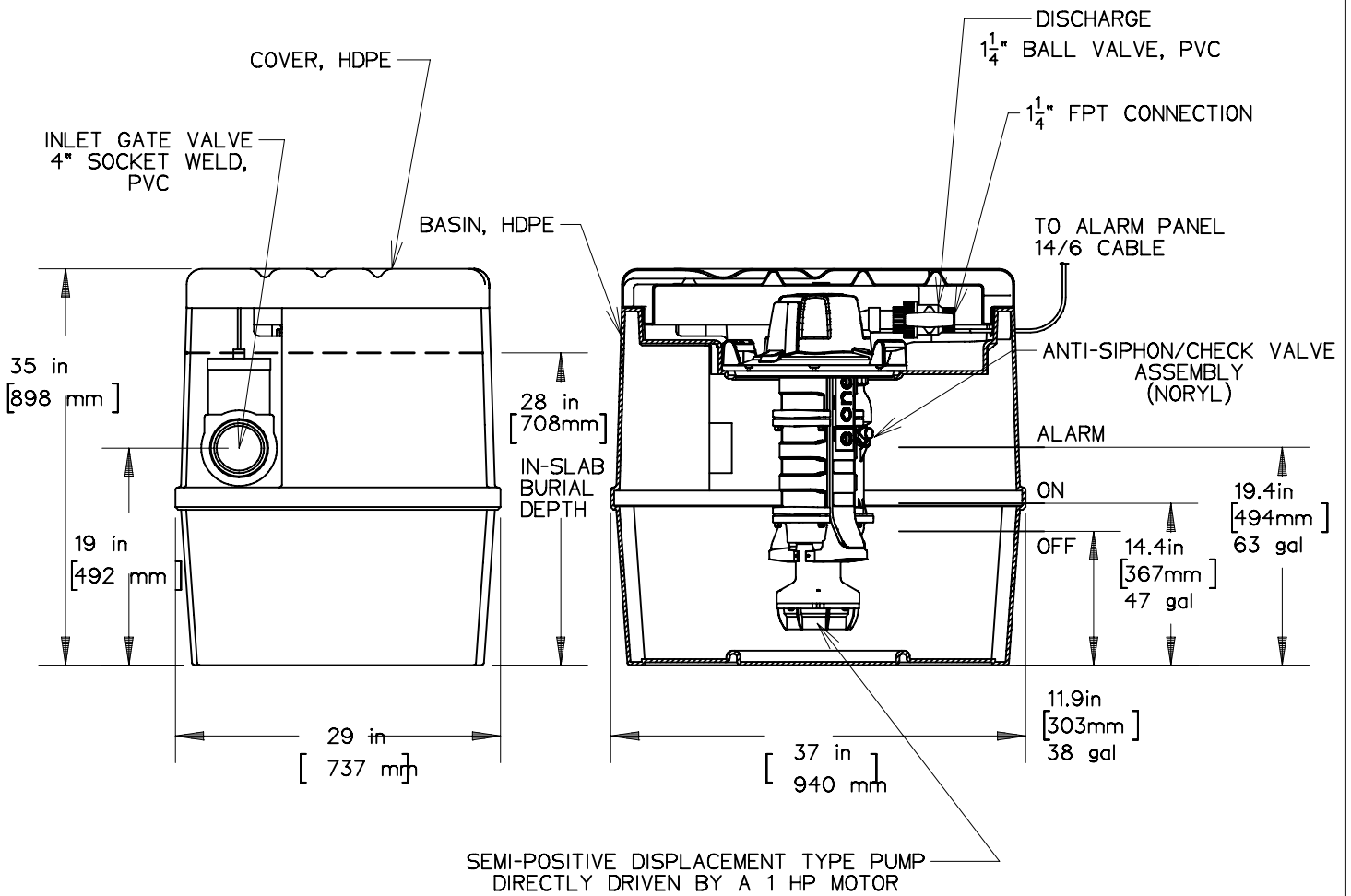
Alarm panels are available with a variety of options, from basic monitoring to advanced notice of service requirements.

The Remote Sentry is ideal for installations where the alarm panel may be hidden from view.



Patent Numbers: 5,752,315
5,562,254 5,439,180

IH091



BASIN CAPACITY = 91 GALLONS



SGS		4-26-07	-	1/16
DR BY	CHK'D	DATE	ISSUE	SCALE

e one
SEWER SYSTEMS

IH091 STATION, DETAIL SHEET

NA0056P02