

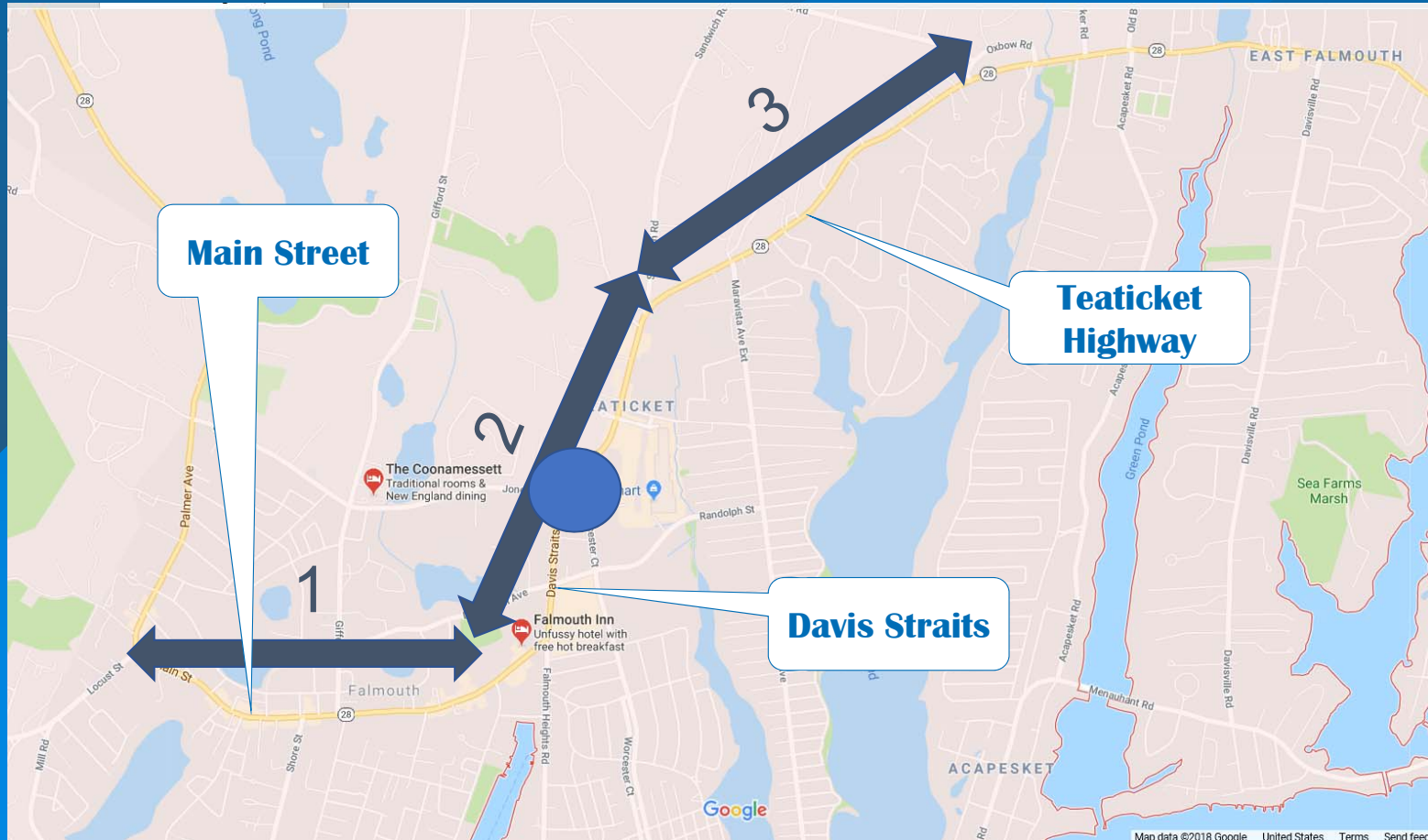


Route 28 (Main St / Davis Straits / Teaticket Highway) Corridor Improvements Town of Falmouth

Conceptual Design Presentation
& Listening Session
October 25, 2018
6:00 PM



Route 28 Corridor Segments





What this meeting is...

- An opportunity for our team to LISTEN to public concerns and challenges about the Route 28 corridor
- An opportunity to LEARN about recent revisions to the project
- An opportunity to learn about our next steps and the design and permitting process ahead

What this meeting is NOT...

- A presentation of a final plan
- Your only opportunity to provide input





Project Activities Completed

- Route 28 Corridor Study by McMahon Associates
- Field survey and property research along roadway limits
- Road Safety Audit with DPW, MassDOT, Cape Cod Commission and Falmouth Police & Fire
- Conceptual layout of multi-modal transportation improvements
 - Intersection configurations
 - Traffic flow / controls
 - Sidewalks & crosswalks
 - Bike lanes
- Approval by MassDOT Project Review Committee for future State/Federal funding
- Revisions to project in response to public feedback received



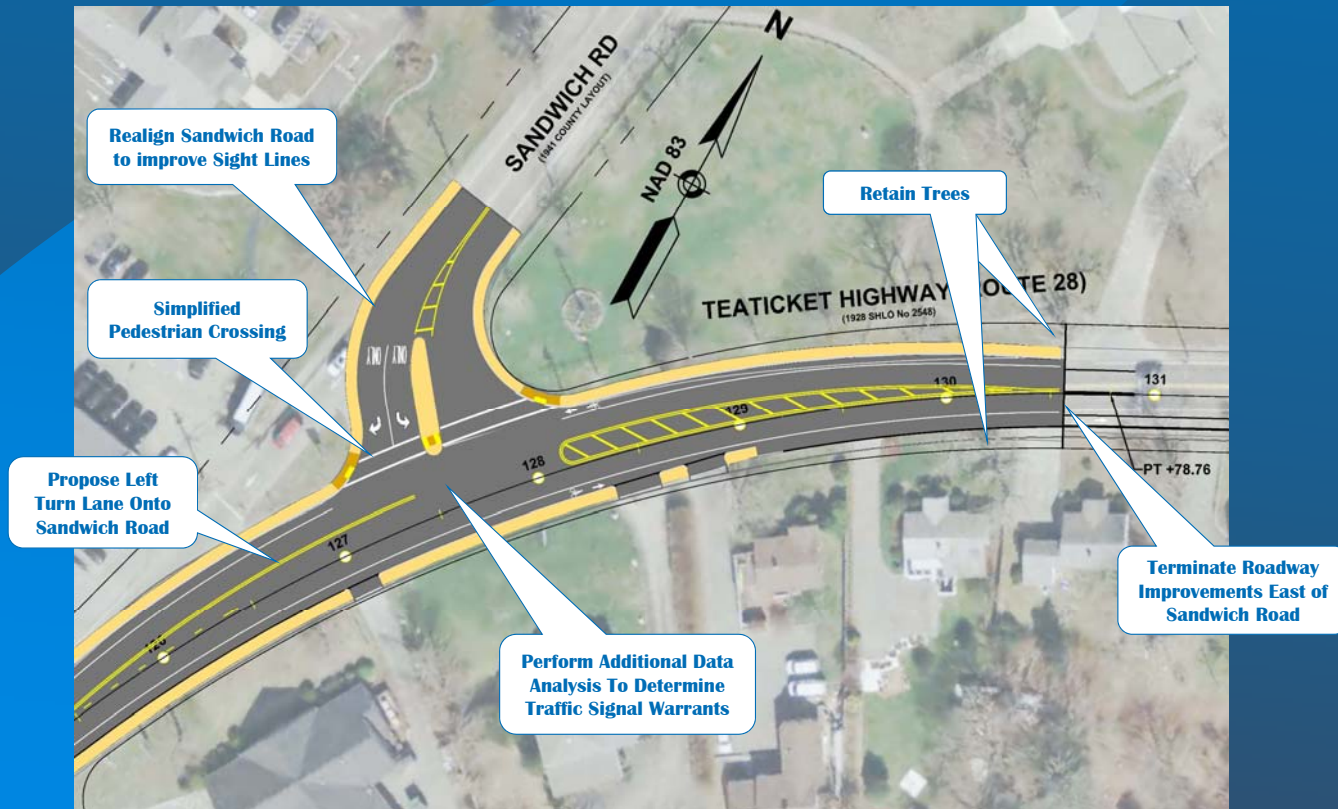
Proposed Improvements

Segment 3 - Sandwich Road to Oxbow Road



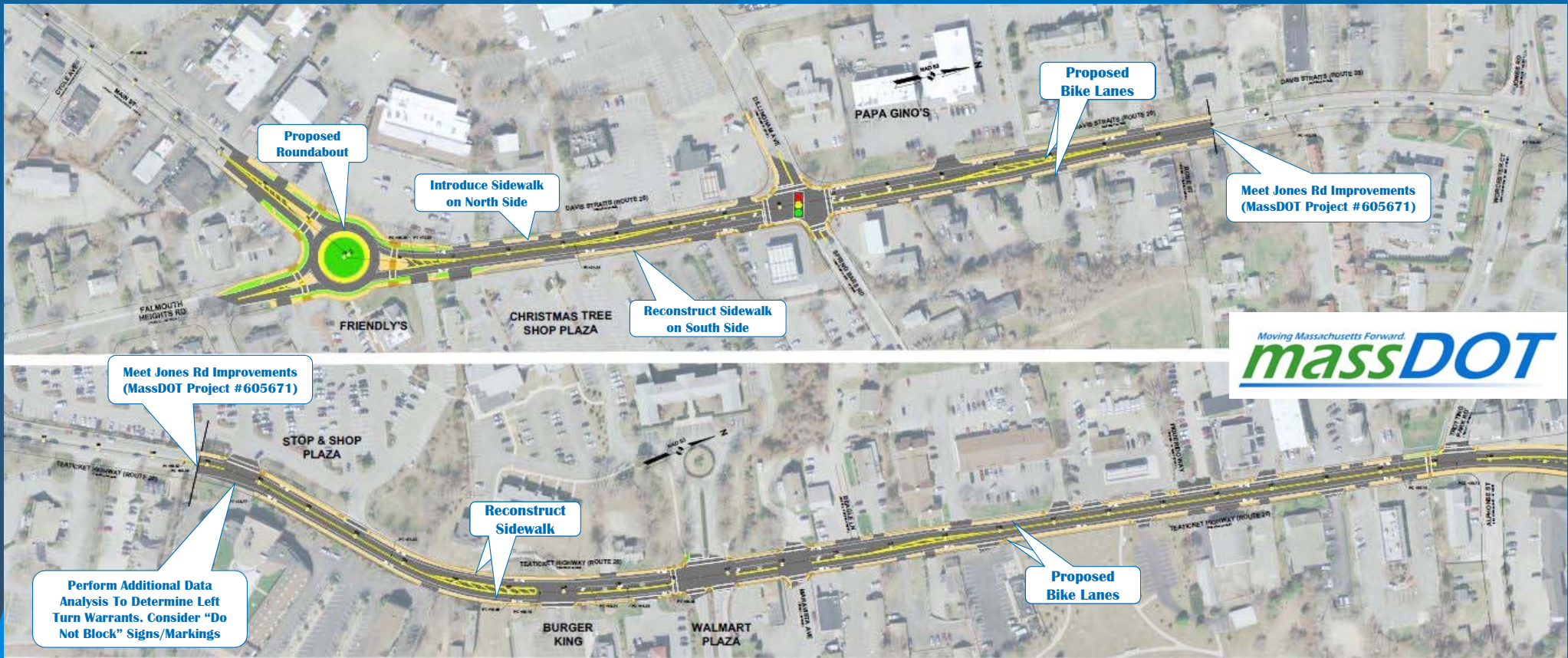
Key Location

Sandwich Road & Revised Project Terminus



Proposed Improvements

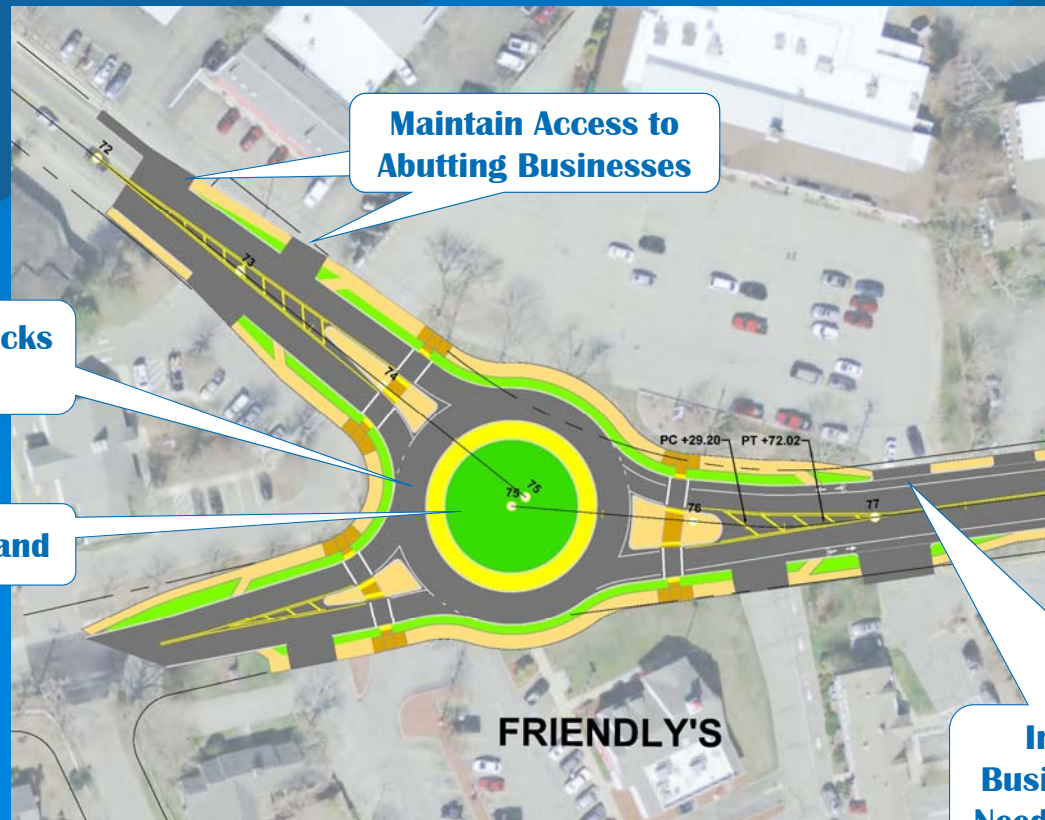
Segment 2 - Falmouth Heights to Trotting Park Rd





Key Location

Falmouth Heights Road Roundabout



Maintain Access to Abutting Businesses

Sized For Commercial Trucks & Large Boat Trailers

Landscaped Center Island

Improves Access For Businesses By Eliminating Need For Certain Left-turns

Why a Roundabout?

- Most viable option for improved efficient traffic control, given that a traffic signal is not warranted
- Level of Service improvement
- Traffic calming measure = lower speeds
- Safety – FHWA proven countermeasure to reduce severity of crashes
- Provides opportunity for aesthetic gateway to Main Street village commercial district (“Welcome to Falmouth” sign, landscaping)
- Accommodates improved pedestrian crossings and connectivity (seniors, children)
- Bicycles may safely bypass via a shared-use path adjacent to circulating roadway
- Efficiently accommodate U-turns and substitute left-turns from nearby properties for safer right-turns





Next Steps

- Collect additional traffic data
- Advance design and review potential impacts related to widening and options for traffic control
- Continue discussions with abutters
- Falmouth Heights Road to Sandwich Road (State Highway):
 - 25% Design Submittal – Early 2019



Questions ?

Please send follow-up questions or observations to:

Jonathan Rockwell, PE (Project Manager)

c/o Megan Fleming
mfleming@theengineeringcorp.com
978.794.1792

